



Building and Accelerating Implementation at Health PEI

Health PEI

Health PEI: By The Numbers



SCOPE

10,000+ surgical procedures
169,000+ diagnostic imaging tests
419,000+ primary care visits
3,223 Off-Island specialty referrals

7 acute care facilities
9+10 long-term care facilities
17 patient medical homes



PEOPLE

7,370 employees
421 professions
263 physicians

6,928 unionized employees
4 collective agreements + 1 PSA

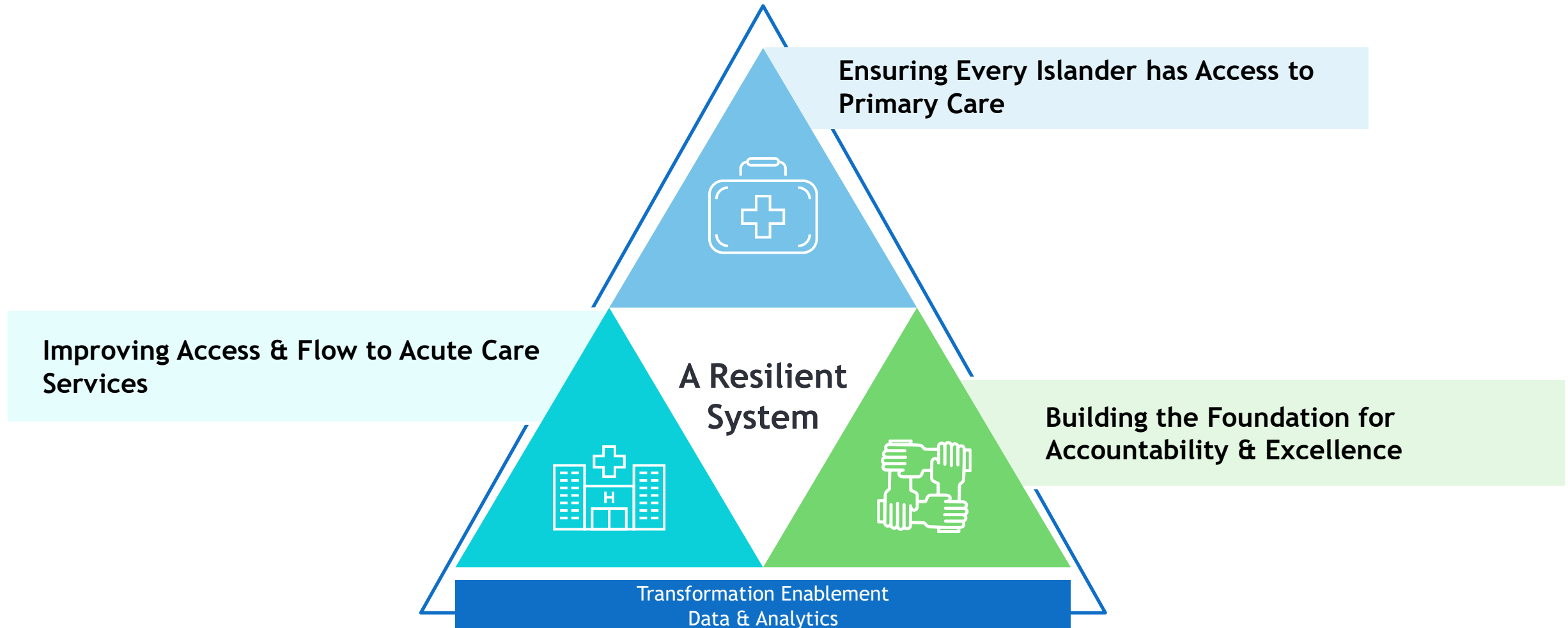


BUDGET

\$1.1b+ operating budget
\$300m capital budget

Transforming Healthcare

The government has made a significant investment in transforming PEI's healthcare system. Through this investment, Health PEI has made improvements in addressing the Island's most critical healthcare challenges.



Wait times for hospital beds are decreasing



34%

Decrease in time waiting in ED for inpatient bed (over 35 hours)

90th percentile in Q1 FY25/26 to date vs Q3 FY24/25



31%

Increase at PCH in average weekly discharges home since Jan 2025

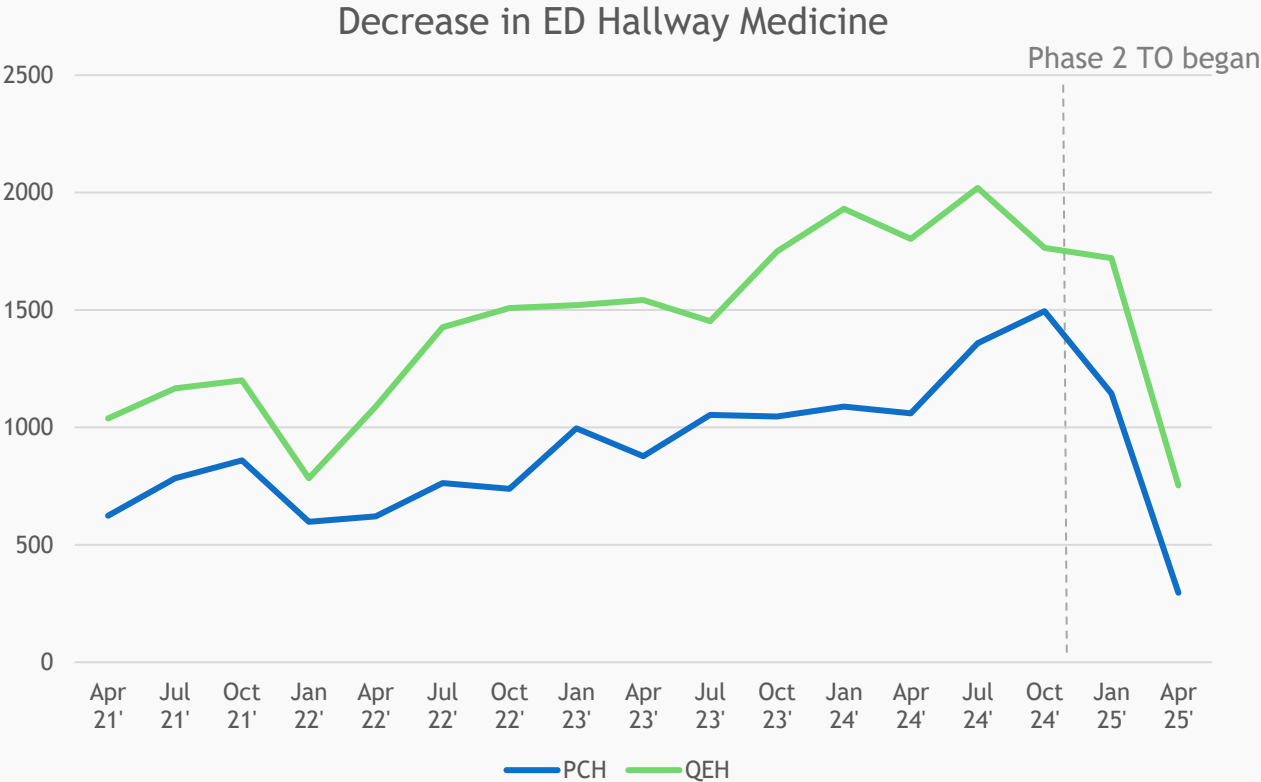
From Jan 6 to Apr 25, surgical, restorative and medicine



17

Additional staffed hospital beds added to the system this year

FY24/25 vs FY23/24



In the past 6 months



234

Less patient days at PCH where ED hallway medicine was provided (down 54%)



64

Less patient days at QEH where ED hallway medicine was provided (down 11%)

Total number patients admitted at midnight but remaining in ED and receiving 'hallway medicine' (IAB) in Apr 2025 vs Nov 2024

Surgeries (hip, knee, and eye) are up 36% year over year



Cataract waitlist will be cleared by the end of 2025



600

More Islanders projected to receive surgeries in 2025 (10% increase in surgical volumes)



160

Surgery cancellations prevented this summer through staffing optimization



In the past year

1,083 (2X)
More cataract surgeries



52 (22%)
More hip surgeries



25 (7%)
More knee surgeries



Inception of cataracts clinic to date
(Dec-Mar FY24/25 vs Dec-Mar FY23/24)

Number of surgeries completed FY24/25 vs FY23/24

MRI wait times meet national benchmarks



Semi-urgent scans with contrast will be **within benchmark** by the end of 2025

MRI wait times are decreasing:

✓ **2 weeks**

Urgent scans (within benchmark)

✓ **16 to 4 weeks**

Semi-urgent scans without contrast (within benchmark)

↓ **64 to 13 weeks**

Semi-urgent scans with contrast

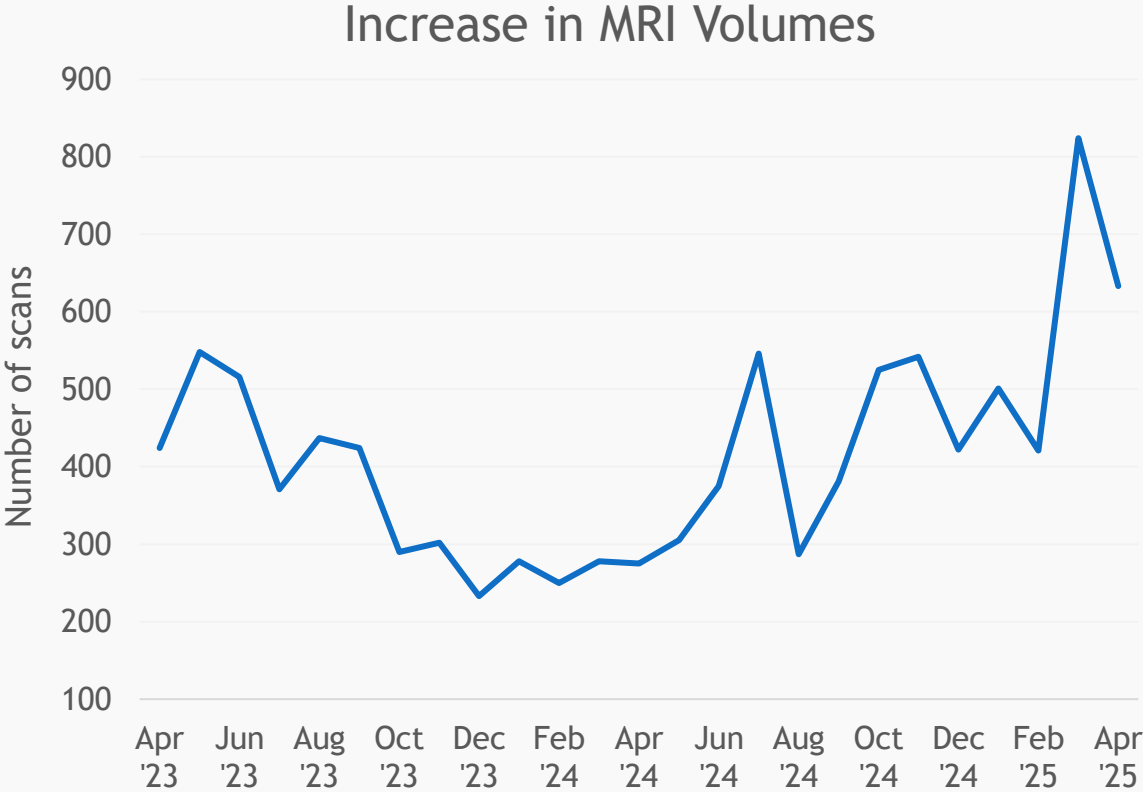
↓ **156 to 60 weeks**

Routine scans

↑ **50%**

More MRIs completed at QEH this April vs. last

Apr 2025 vs Apr 2024 (excluding Moncton)



In the past quarter

940 (117%)

More MRIs



1,359 (19%)

More CTs



465 (9%)

More Ultrasounds



Number of scans completed Q4 FY24/25 vs Q4 FY23/24

More Islanders have access to primary care



3,175

Islanders affiliated to primary care to-date in 2025 (target 10,000)



8,684

Islanders affiliated to primary care since Jan 2024

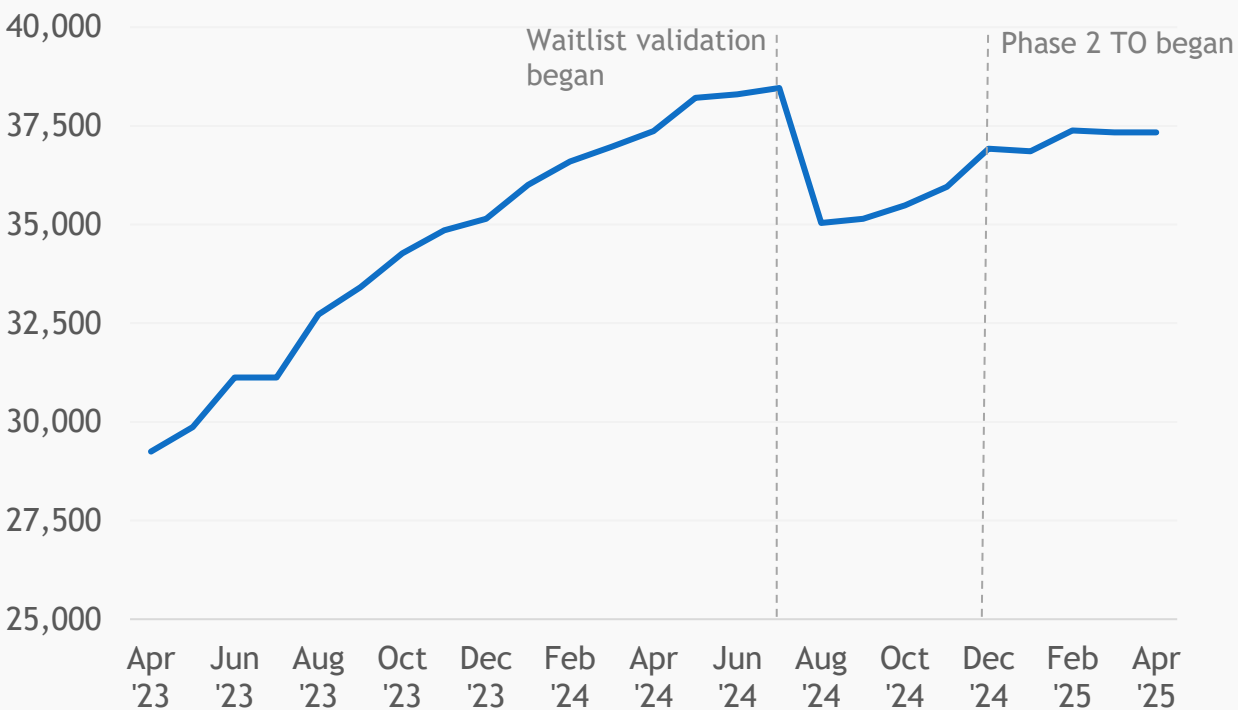


20,162

Additional PCAC & Maple visits in 2024/25 compared to 2023/24



Patient Registry Volumes



	New Applicants	Affiliated patients	Inactivated Patients	Net New Patients	Registry Today
Jan 1 - May 9	4,023	3,175	1,097	(69)	36,790

We are building our healthcare workforce



So far this year, **12** physicians have been hired. Our target is to hire **60** new physicians in 2025, an increase from 41 physicians last year



Over the past 11 months, we have hired **10** newly graduated Nurse Practitioners, maintaining the **highest number of NPs per capita** in Canada



So far this year, **1269** staff have joined HPEI. A further **623** positions were created using flex hiring, **72** of these positions have been filled



To date this year, we have hired **80** Internationally Educated Nurses, 35 of whom start in July. We also have **54** accepted offers from the UPEI graduating class.

How we achieved success



A focused set of priorities



Implemented global best practice



Maintained alignment



Listened to our communities



Created the Transformation Office



Allocated resources to priorities

Key challenges addressed



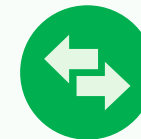
Change resistance

As new initiatives were introduced



Culture shifts

Moving to growth and modernization mindset



Navigating between systems

Ensuring frequent connection with partners

Other successes

- ✓ Introduced new Patient Registry
- ✓ Streamlined Recruitment Processes (physician hiring process 49 to 11 steps)
- ✓ Consolidated Recruitment Team at HPEI
- ✓ Reduced wait time in Emergency Department for an inpatient bed by 34%
- ✓ No waitlist for community mental health Open Access Counselling
- ✓ Open PCH ICU in Summer 2025
- ✓ 20 students start this summer at medical school and filled all teaching positions
- ✓ Launched a Patient Relations Team
- ✓ More LTC beds than ever before (1,296 combined between public and private)

The next horizon of transformation: driving health system value



Transforming healthcare delivery with
Artificial Intelligence

Leverage Atlantic partnerships to keep
pace with care innovations



Optimizing primary care delivery at the
UPEI PMH

Create 2.0 PMH model using learnings
to optimize care model



Improving performance through
Operational Excellence

Continuing to align resources and
performance to deliver on
health system goals



Health PEI