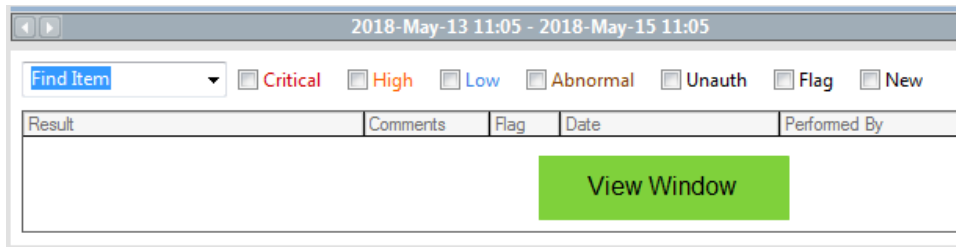
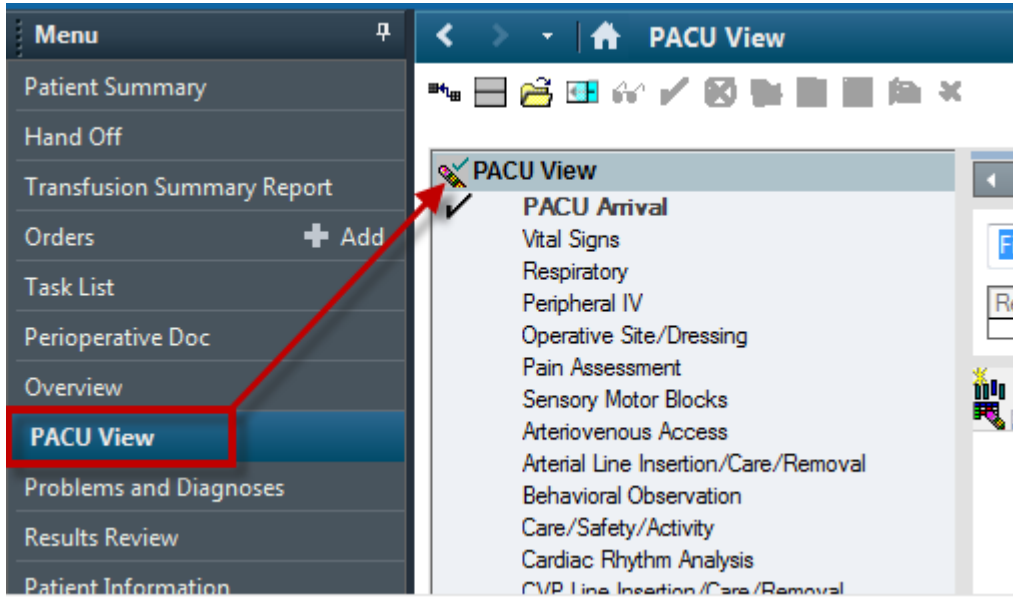


PACU Documentation

To access PACU view:

Click on PACU View on the Navigational Menu



		2018-May-14	
		11:25	09:47
▶ PACU Arrival			
▲ Vital Signs		<input checked="" type="checkbox"/>	
PACU Level of Consciousness			
Temperature Tympanic	degC		
PACU Skin Temperature/Description			
Temperature Oral	degC	36	
Temperature Axillary	degC		
Peripheral Pulse Rate	bpm	88	
Heart Rate Monitored			