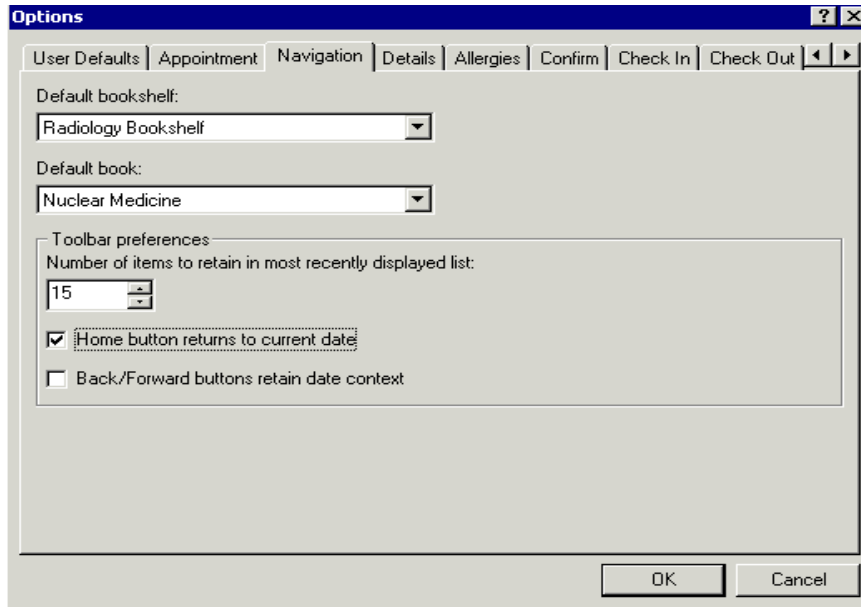


# User Preference Setup

## Navigation Tab



1. **Default Bookshelf list** - Enter the name of the resource bookshelf to be displayed as your default bookshelf. There is a list available to assist you in selecting a predefined bookshelf.
2. **Default Book list** - Enter the name of the resource book to be displayed on the bookshelf as your default book. There is a list available to assist you in selecting a predefined book.
3. **Number of Items to Retain in Most ...spin box** - Select the number of items you want to be retained in the Back list.
4. **Back/Forward Buttons Retain Date Context option** - Select this option if you want the Back and Forward toolbar buttons to dates as you navigate with the calendar.
5. **Home Button Returns to Current Date option** - Select this option if you want the Home toolbar button to return you to the current date.