

# COLORECTAL CANCER SCREENING

## DROP OFF LOCATIONS

Islanders can drop off a FIT kit at many doctor's/nurse practitioner offices or health centres. See previous page for addresses of health centres.

## HOSPITAL LABS ALSO ACCEPT FIT SAMPLES AT THE SPECIMEN COLLECTION COUNTER.

If the testing kit has a prepaid return envelope, you can return it by mail and drop it off at a local Canada Post office

For more information, contact

# 1-888-561-2233

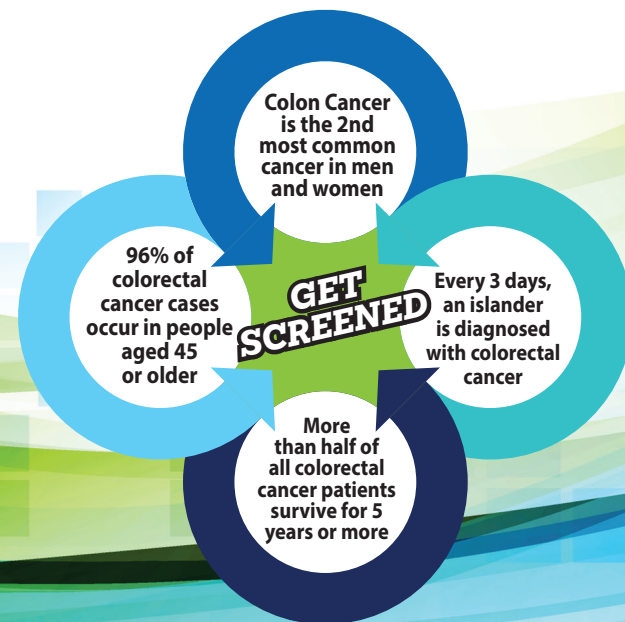
Colorectal Cancer Screening program.

## KNOW THE SYMPTOMS OF COLORECTAL CANCER

Look for:

- Persistent change in bowel habit (looser or more diarrhea-like stool, constipation, or smaller and more frequent bowel movements).
- Change in the stool's appearance (narrower, mucous).
- Blood in the stool or rectal bleeding.
- Frequent gas pains or cramps.
- Feeling of fullness or bloating.
- Feeling that the bowel has not emptied completely.
- Unexplained anemia causing tiredness, weakness, or weight loss.
- Rectal or anal pain.
- Lump in the rectum or anus.
- Abdominal pain or swelling.

If you develop any colorectal cancer symptoms, see your doctor or nurse practitioner. Other medical conditions and certain foods and medications can cause similar changes.



## REDUCE YOUR RISK FOR COLORECTAL CANCER

Live Well PEI provides free programs and information to help Islanders make healthy choices and live their best lives.

They provide resources about:

- Quitting smoking – Access free resources and programs to help you quit or cut down on tobacco use.
- Healthy eating and nutrition – Guidance, recipes, and information to support balanced, affordable meals.
- Physical activity – Tips and local to help Islanders stay active at home, work, and in the community.
- Vaccination and screening awareness – Information to support prevention and early detection of illness.

For more information, visit [LiveWellPEI.ca](http://LiveWellPEI.ca) or speak with your healthcare provider about supports available in your area.

## HEALTH PEI COLORECTAL CANCER SCREENING

Call **1-888-561-2233** to get a stool testing kit mailed to you or register online

[HealthPEI.ca/GetaFIT](http://HealthPEI.ca/GetaFIT)

Phone: **1-888-561-2233**

Email: [colcerscreening@ihis.org](mailto:colcerscreening@ihis.org)

For more information on colorectal cancer and support groups, visit:

**Cancer.ca** - Canadian Cancer Society  
Canadian Cancer Statistics publication  
**ColorectalCancerCanada.ca**  
- Colorectal Cancer Canada

Data Sources: 2019-2023 Health PEI

# GET SCREENED FOR COLORECTAL CANCER TODAY

# Health PEI

**HEALTHPEI.CA • 1 888 561 2233**

## DO YOU WANT TO KNOW MORE ABOUT HEALTH PEI'S COLORECTAL CANCER SCREENING PROGRAM?

Colorectal cancer often begins, without any warning signs, as polyps in the colon. Over time, these polyps can turn into cancer. Untreated colorectal cancer can cause many problems. It can spread from the bowel to other organs, causing obstruction, bleeding, and pain. Ultimately, you can die from colorectal cancer. Finding and treating it at an early stage improves your chances of survival. The colorectal cancer screening program checks for colonic polyps and colon cancer in people who don't show any symptoms.

## HOW COMMON IS COLORECTAL CANCER IN PRINCE EDWARD ISLAND?

Almost 1 in 4 people are diagnosed when the cancer is already at a late stage.

Every 3 days, someone on Prince Edward Island is told they have colorectal cancer.

96% of cases happen in people aged 45 or older.

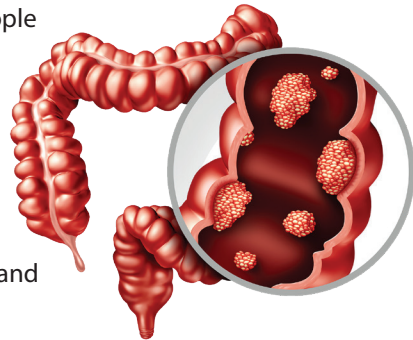
There is hope: About 2 out of 3 people with colorectal cancer live 5 years or more after diagnosis.

Screening can help find cancer early—when it's easier to treat.

## BENEFITS

Combined with the right follow-up, colorectal cancer screening can lower the number of deaths from colorectal cancer.

Early detection of colorectal cancer can mean less treatment and less time spent recovering.



## LIMITATIONS

Sometimes, test results can be worrying, and you might think you have cancer even though you don't. A colonoscopy can rule out or confirm colorectal cancer or polyps.

Sometimes, a test may not detect cancer even when it is present. This is because polyps don't always bleed or because the sample that was taken missed blood.

## WHAT TESTING OPTIONS ARE THERE? FOR ISLANDERS WITH NO SYMPTOMS AND NO FAMILY HISTORY OF COLON CANCER OR COLONIC POLYPS:

Screening every 2 years between the ages of 45 and 74 could save your life. The stool test checks for blood in your stool (poo), which can be a sign of colorectal cancer. This test can be completed at home and is available for free.

For Islanders with a family history of colon cancer or colonic polyps:

A colonoscopy at the age of 40, or 10 years earlier than your youngest affected relative (mother, father, brother, sister, child), is recommended. See your doctor or nurse practitioner to discuss a referral for a colonoscopy or if you do not have a doctor call a nurse navigator from the screening program at **1-855-733-0762**.

**BE SURE TO LEARN ABOUT YOUR FAMILY'S HEALTH AND CANCER HISTORY!**

**See your doctor if you have blood in your stool, bleeding from your rectum, or other signs of colorectal cancer.**

## THE STOOL TEST

The stool test checks for hidden blood in the stool (poo). Tumours and other growths have blood vessels that can release a small amount of blood into the stool. Blood in the stool is often caused by other things, like hemorrhoids. If the stool test results are suspicious, a colonoscopy is recommended to rule out or confirm colorectal cancer.



## THE COLONOSCOPY

In a colonoscopy, a thin, flexible tube with a light, a camera, and a tool to remove polyps is inserted through the anus into the colon. This allows the doctor to examine the colon. Before a colonoscopy, the colon must be cleaned. This process is called bowel prep. On the day of your colonoscopy, you will be given medicine that puts you in a light sleep. After the colonoscopy, you will need an adult with you at home to make sure you are okay. Problems after colonoscopies are rare, but there is a risk that the colonoscopy tool can push too hard against the colon and cause a small tear. If this happens, your doctor may need to repair it with surgery.

**ORDER A STOOL TEST**  
**1 888 561 2233**

or pick it up from a doctor's/nurse practitioner's office.



## Sherwood Medical Center

15 Brackley Point Road (Dr. McKenna's office)  
Charlottetown, PE C1A 6Y1  
Telephone: (902) 629-8842

## Four Neighborhoods Health Centre

152 St. Peter's Road  
Charlottetown, PE C1A 5P8  
Telephone: (902) 569-7772

## Central Queens Health Centre

4276 Hopedale Road  
Hunter River, PE C0A 1N0  
Telephone: (902) 621-3050

## Gulf Shore Health Centre

7379 Cavendish Rd - Rte 6  
North Rustico, PE C0A 1X0  
Telephone: (902) 963-7835

## Kensington Health Centre

55 Victoria Street  
Kensington, PE C0B 1M0  
Telephone: (902) 836-0180

## Eastern King's Health Centre

7 Green Street  
Souris, PE C0A 2B0  
Telephone: (902) 687-7033

## Montague Health Centre

407 MacIntyre Avenue  
Montague, PE C0A 1R0  
Telephone: (902) 838-0830

## West Prince Health Network

Tyne Valley Health Centre  
6905 Route 12  
Tyne Valley, PE C0B 1P0  
Telephone: (902) 831-5800

## O'Leary Health Centre

14 MacKinnon Drive  
(adjacent to Community Hospital)  
O'Leary, PE C0B 1V0  
Telephone: (902) 859-3929