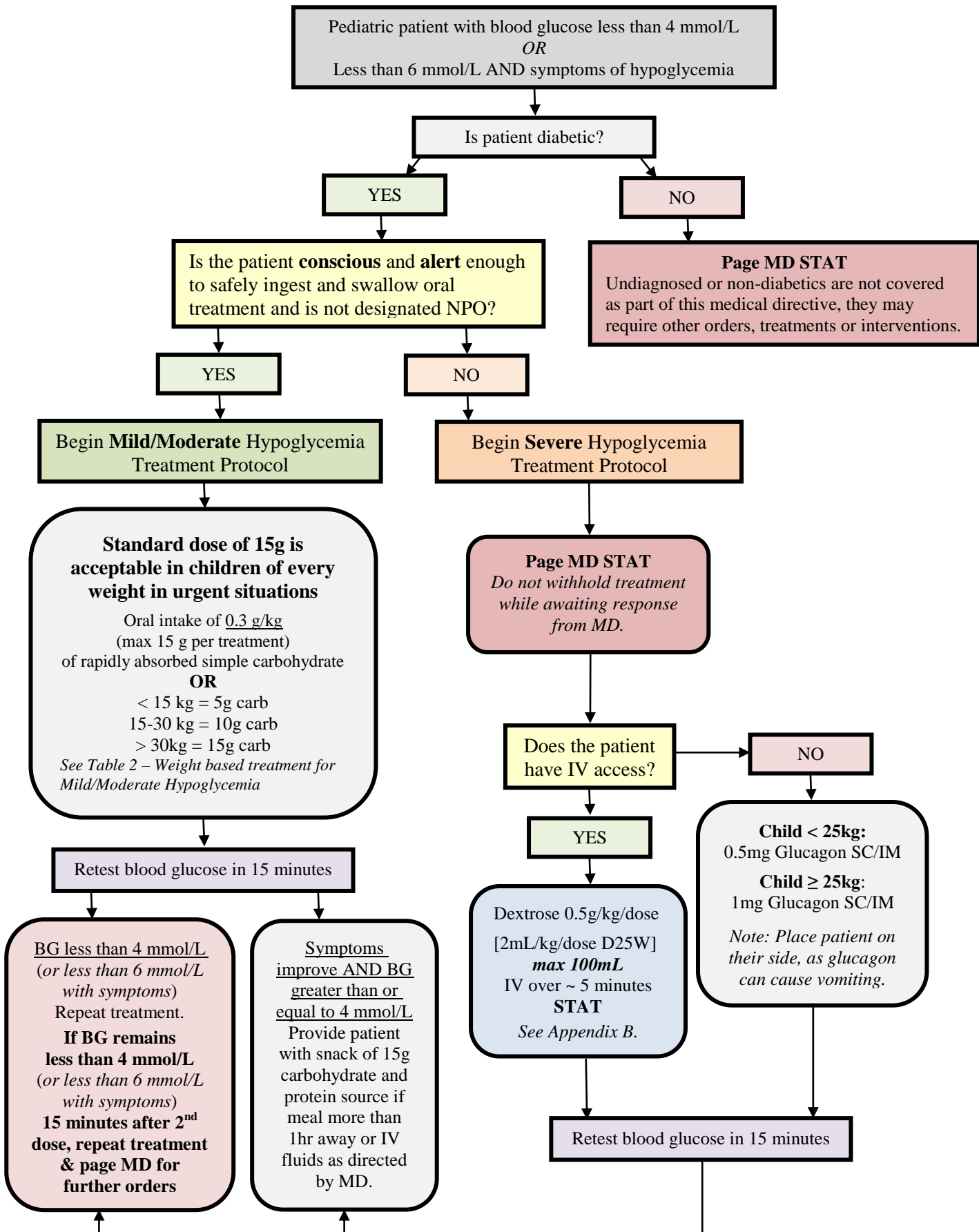


Health PEI

Appendix A

PEDIATRIC INPATIENT/ACUTE CARE Hypoglycemia Treatment Algorithm



Appendix B

Dextrose Preparation and Dosing

| 100mL Dextrose 25% in water (D25W) preparation: | | | |
|--|---------------------------------------|------------|---|
| Add: | 45 mL of dextrose 50% in water (D50W) | To: | 50 mL bag of dextrose 5% in water (D5W) <i>NOTE: bag contains 5 mL of overfill</i> |
| This will yield a 100 mL dextrose 25% in water (D25W) solution. (Bag contains: 45 mL + 50 mL + 5 mL overfill = 100 mL) | | | |

| Weight | Dextrose 0.5g/kg/dose for IV administration | |
|--------------------|--|---|
| | Volume of Dextrose 25% (D25W) to be infused | Volume of Dextrose 10% (D10W) to infuse if D25W is unavailable |
| 5 kg | 2.5 g (10 mL) | 2.5 g (25 mL) |
| 6 kg | 3 g (12 mL) | 3 g (30 mL) |
| 7 kg | 3.5 g (14 mL) | 3.5 g (35 mL) |
| 8 kg | 4 g (16 mL) | 4 g (40 mL) |
| 9 kg | 4.5 g (18 mL) | 4.5 g (45 mL) |
| 10 kg | 5 g (20 mL) | 5 g (50 mL) |
| 11 kg | 5.5 g (22 mL) | 5.5 g (55 mL) |
| 12 kg | 6 g (24 mL) | 6 g (60 mL) |
| 13 kg | 6.5 g (26 mL) | 6.5 g (65 mL) |
| 14 kg | 7 g (28 mL) | 7 g (70 mL) |
| 15 kg | 7.5 g (30 mL) | 7.5 g (75 mL) |
| 16 kg | 8 g (32 mL) | 8 g (80 mL) |
| 17 kg | 8.5 g (34 mL) | 8.5 g (85 mL) |
| 18 kg | 9 g (36 mL) | 9 g (90 mL) |
| 19 kg | 9.5 g (38 mL) | 9.5 g (95 mL) |
| 20 kg | 10 g (40 mL) | 10 g (100 mL) |
| 21 kg | 10.5 g (42 mL) | 10.5 g (105 mL) |
| 22 kg | 11 g (44 mL) | 11 g (110 mL) |
| 23 kg | 11.5 g (46 mL) | 11.5 g (115 mL) |
| 24 kg | 12 g (48 mL) | 12 g (120 mL) |
| 25 kg | 12.5 g (50 mL) | 12.5 g (125 mL) |
| 26 – 30 kg | 15 g (60 mL) | 15 g (150 mL) |
| 31 – 35 kg | 17.5 g (70 mL) | 17.5 g (175 mL) |
| 36 – 40 kg | 20 g (80 mL) | 20 g (200 mL) |
| 41 – 45 kg | 22.5 g (90 mL) | 22.5 g (225 mL) |
| Greater than 45 kg | 25 g (100 mL) | 25 g (250 mL) |