

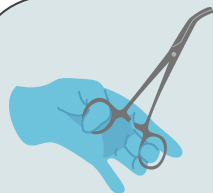


**DID YOU
KNOW?**

Health PEI

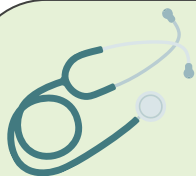
Spaulding's Classification

Spaulding's Classification is a system used in healthcare to determine the level of cleaning, disinfection, or sterilization required for medical equipment/devices based on the risk of infection they pose. It categorizes instruments into **three** groups:



➔ **Critical:** Instruments that enter sterile tissue or the bloodstream (e.g., surgical tools) — **Require sterilization.**

➔ **Semi-Critical:** Devices that contact mucous membranes or non-intact skin (e.g., endoscopes) — **Require high-level disinfection.**



➔ **Non-Critical:** Items that touch intact skin only (e.g., blood pressure cuffs) — **Require low or intermediate-level disinfection.**

This classification helps ensure proper reprocessing of medical equipment/devices to prevent infections and promote patient safety!