

Health PEI: Medical Affairs Office

Chief Medical Officer
Dr. Kathie McNally

Administrative Assistant
Kelsey Woods

Executive Director, Medical Affairs
Lauren Kelly Weyman

Senior Advisor
Neil Stewart

Administrative Assistant
Vacant

Manager Physician Services, Family Medicine
Mary Laura Coady

Manager Physician Services, Specialists
Julie Cole

Complaints Resolution Consultant
Laurie McNally

Program Development Lead
Cody Clinton

Program Development Lead
Matthew Doucette

Program Development Lead
Nadine Landon

Program Development Lead
Chelsea Whitty

Medical Affairs Coordinator - O&O
Vacant

Physician Services Coordinator
Andrea Campbell

Administrative Assistant
Vanessa Ferguson

Administrative Assistant
Danielle LeBlanc

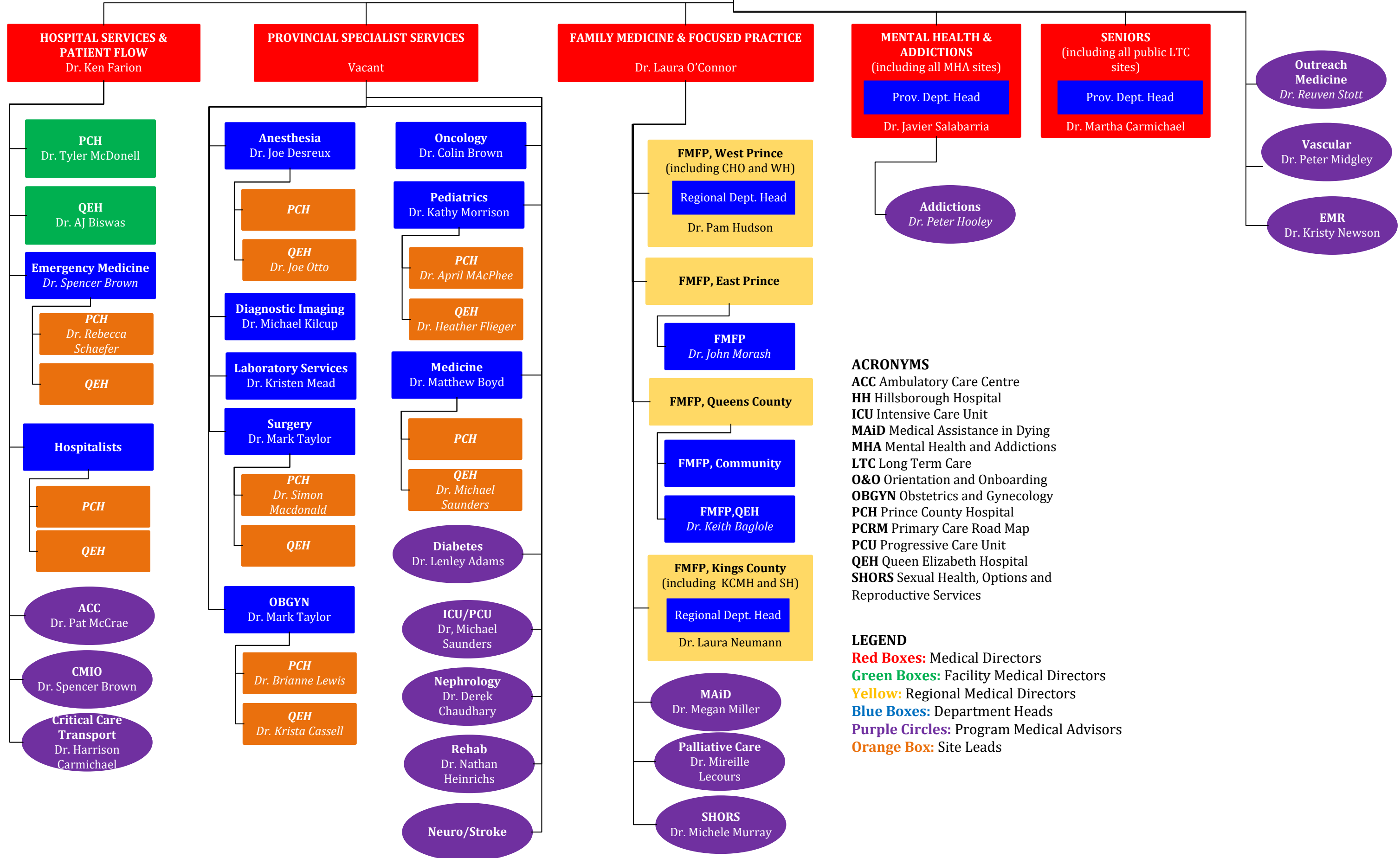
Medical Affairs Coordinator-Locum
Christie MacPherson

Physician Services Coordinator
Heather Stevenson

Administrative Assistant
Cynthia Barton

Health PEI: Medical Affairs Office, Physician Leadership

Chief Medical Officer



ACRONYMS
 ACC Ambulatory Care Centre
 HH Hillsborough Hospital
 ICU Intensive Care Unit
 MAiD Medical Assistance in Dying
 MHA Mental Health and Addictions
 LTC Long Term Care
 O&O Orientation and Onboarding
 OBGYN Obstetrics and Gynecology
 PCH Prince County Hospital
 PCRM Primary Care Road Map
 PCU Progressive Care Unit
 QEH Queen Elizabeth Hospital
 SHORS Sexual Health, Options and Reproductive Services

LEGEND
Red Boxes: Medical Directors
Green Boxes: Facility Medical Directors
Yellow: Regional Medical Directors
Blue Boxes: Department Heads
Purple Circles: Program Medical Advisors
Orange Box: Site Leads