

Just Culture Health PEI

HR – Organizational Development
HR – Occupational Health, Safety, & Wellness
Quality & Patient Safety





Just Culture

Christine Handrahan
christinehandrahan@ihis.org



What is Just Culture

Just Culture is a model of workplace justice.

It's a **culture** that holds **individuals** responsible
for the quality of their choices.

It's a **culture** that holds **organizations**
responsible for:

- the systems they design
- how they respond to errors & choices in a way that is objective, fair, and predictable

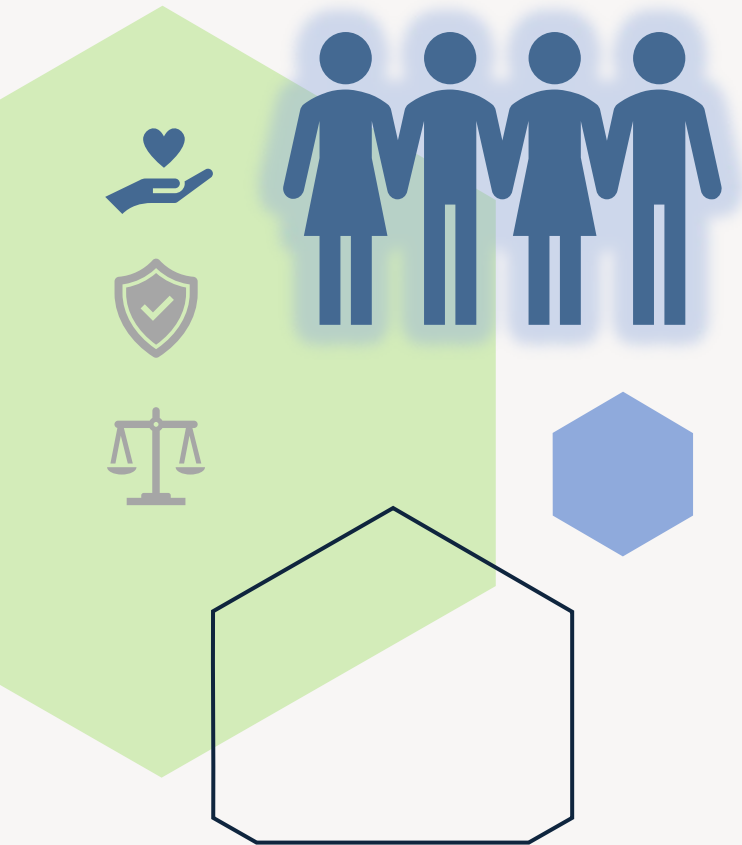


Just Culture & Health PEI

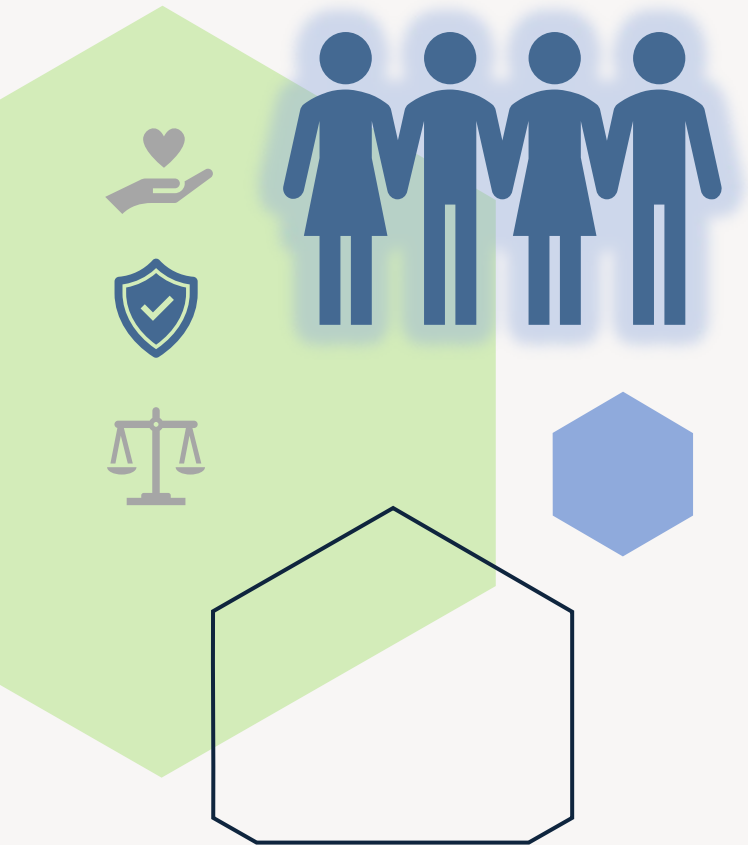
Protects Our Values

- *Caring*: Fosters an environment of **psychological safety**
- *Integrity*: A system of **responsibility** and **transparency**
- *Excellence*: Strives to **learn** from mistakes to **improve processes**
- *Diversity*: A tool to **support** our workforce **without bias**

These values are a key part in how we provide **safe** and **supportive services** for **staff, patients, and the community**



Just Culture & Health PEI



Improves Patient & Staff Safety

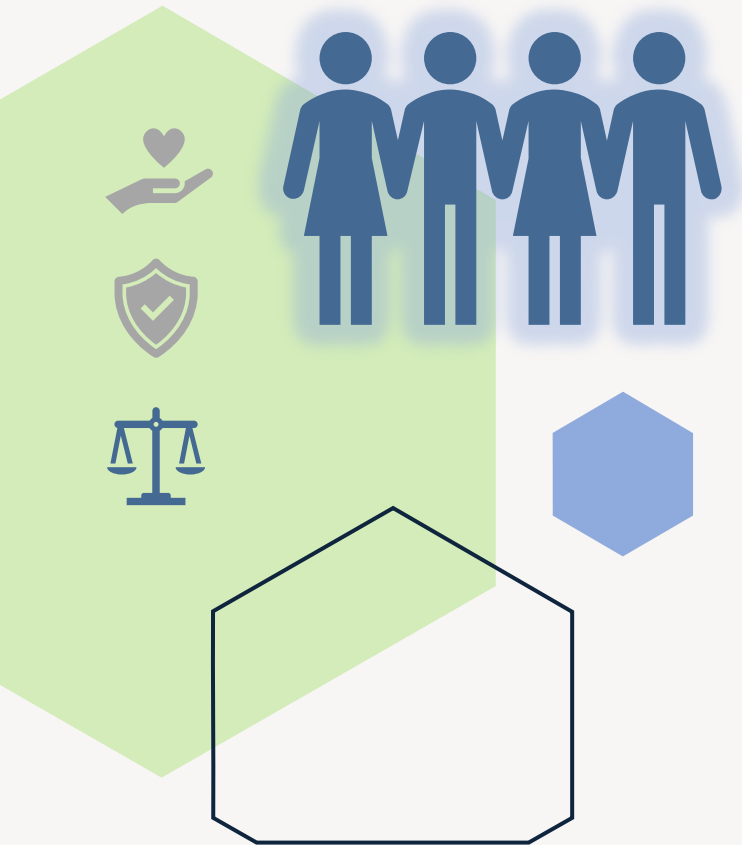
- Manages risk by promoting an **open learning environment** where we can report ideas, incidents, and concerns.
- A Just Culture is the result of everyone's efforts to make the **best possible choices** and **continuously improve** the way work is done.

Just Culture & Health PEI



Increases Trust & Fairness

- Provides a **consistent framework** and **standardized approach** for responding when something outside of our expectations occurs.
- Ensures our responses to investigations of incidents are **fair** by examining the **human** and **system shaping elements**



Just Culture and You



Introductory Video

Learn the basics of the
Just Culture program

(20 minutes)



Online Training

Learn more about the
Just Culture principles
and methodology

(4 hours)



Champion Certification

Become a role model for
Just Culture in your area

(15 hours)



Train the Trainer

Help support
Just Culture at Health PEI

(6 hours)

Contact Us

For more information or to register for training,
contact:

Christine Handrahan

Project Manager – Employee Experience Specialist

christinehandrahan@ihis.org

