



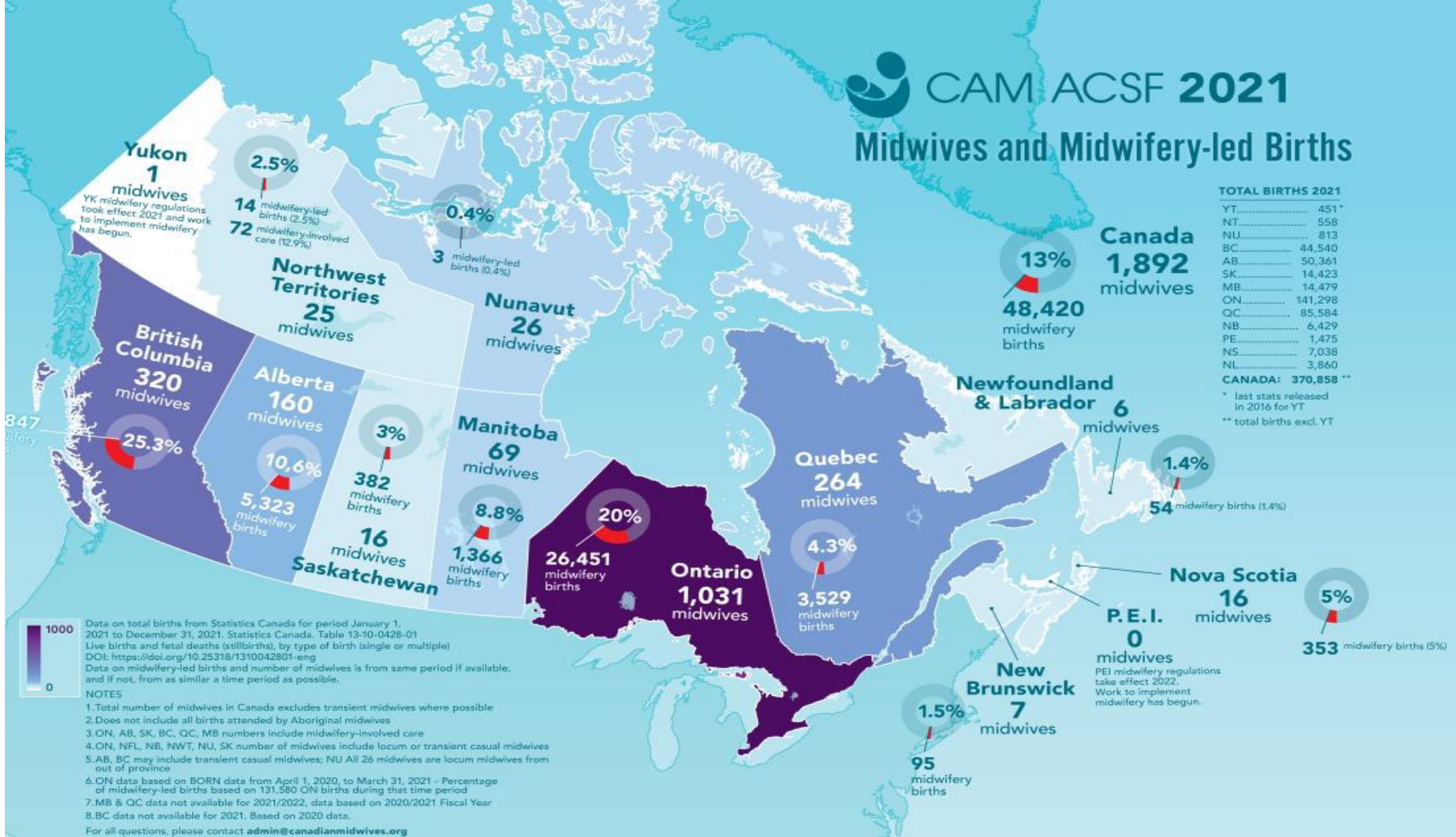
## MIDWIFERY SERVICES PEI

**Mission** - Deliver culturally safe, accessible, and sustainable Midwifery Services that are integrated into the PEI health system.

# Health PEI

# CAM ACSF 2021

## Midwives and Midwifery-led Births



**TOTAL BIRTHS 2021**

YT	451*
NT	558
NU	813
BC	44,540
AB	50,361
SK	14,423
MB	14,479
ON	141,298
QC	85,584
NB	6,429
PE	1,475
NS	7,038
NL	3,860
<b>CANADA</b>	<b>370,858**</b>

\* last stats released in 2016 for YT  
\*\* total births excl. YT

Data on total births from Statistics Canada for period January 1, 2021 to December 31, 2021. Statistics Canada. Table 13-10-0428-01 Live births and fetal deaths (stillbirths), by type of birth (single or multiple) DOI: <https://doi.org/10.25318/1310042801-eng>  
Data on midwifery-led births and number of midwives is from same period if available, and if not, from as similar a time period as possible.

**NOTES**

1. Total number of midwives in Canada excludes transient midwives where possible
2. Does not include all births attended by Aboriginal midwives
3. ON, AB, SK, BC, QC, MB numbers include midwifery-involved care
4. ON, NFL, NB, NWT, NU, SK number of midwives include locum or transient casual midwives
5. AB, BC may include transient casual midwives; NU All 26 midwives are locum midwives from out of province
6. ON data based on BORN data from April 1, 2020, to March 31, 2021 - Percentage of midwifery-led births based on 131,580 ON births during that time period
7. MB & QC data not available for 2021/2022, data based on 2020/2021 Fiscal Year
8. BC data not available for 2021. Based on 2020 data.

For all questions, please contact [admin@canadianmidwives.org](mailto:admin@canadianmidwives.org)

# Canadian Midwifery Education

4-year direct entry Baccalaureate program

- Bridging programs for internationally educated midwives
- Indigenous pathways for education

+

1000 hrs. practicum and 30-40 births.

What  
society  
thinks a  
Midwife  
does

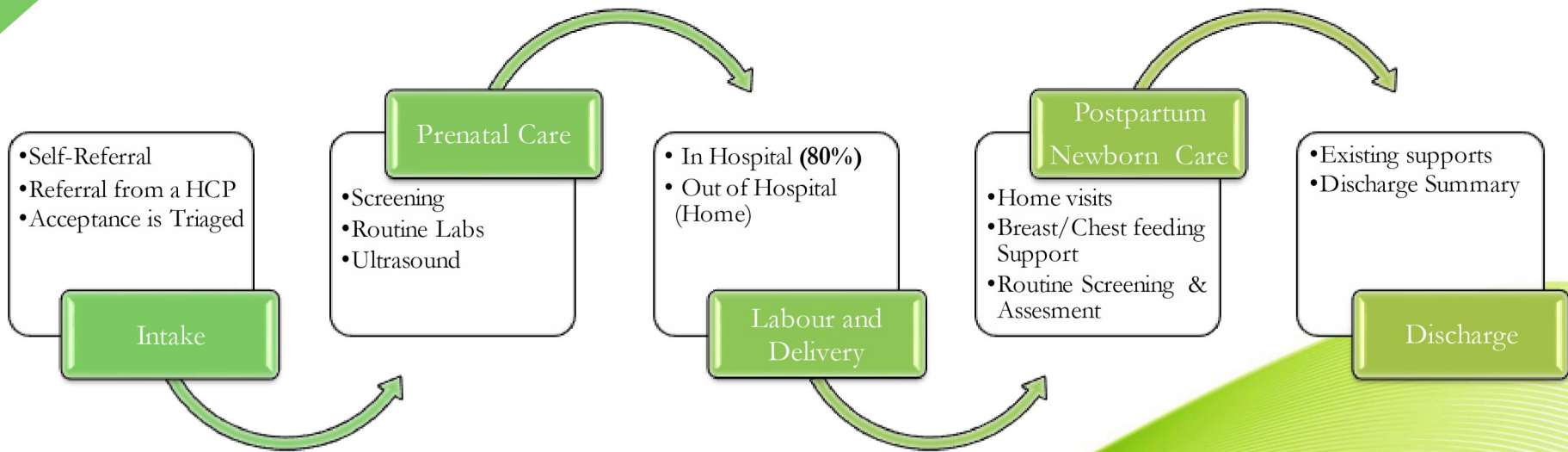


What  
Midwives  
think they  
do





# A Typical Client Journey



In PEI, Midwives can admit, transfer, discharge and prescribe within their scope



# Out of Scope - High risk pregnancies

Midwifery Regulations outline requirements to consult and transfer care

Transfer of care for complicated / high risk pregnancies - midwives may continue to support the client in collaboration with MRP





# Midwifery Services – Team Based Care

Active recruitment since October 2022  
Efforts are ongoing - plan to hire 8 FTEs.

Two teams in Charlottetown and  
Summerside


Currently 2.0 RMs can provide 1.5 clinical  
services.

Third RM hired. Will commence work in  
July 2024.





# Key Messages

- ❖ Midwifery has been regulated since Oct 2022
  - ❖ As a regulated profession "Midwife" is a protected title
  - ❖ Continue investment in recruitment
  - ❖ Build awareness of midwifery scope of practice
  - ❖ Foster integration of services
- 

# How to access Midwifery Services?

- 1) Clients can self-refer through the website, or by calling the clinic.
- 2) Health care providers can refer directly through CIS/CHR, the web form or simply call the clinic at (902) 288-1482.

*\*Midwives will assess all potential clients to determine eligibility for midwifery care.*

## Need additional information?

Please Contact us:

Health PEI Midwifery Services

Telephone: [902-288-1482](tel:902-288-1482)

Email: [hpeimidwife@ihis.org](mailto:hpeimidwife@ihis.org) 

[Make a Request for Midwifery Care](#)