

## Screening Results

---

A healthcare provider will give you the Information Sheet for Parent or Guardian (found attached to the newborn screening blotter collection card) when your baby has the blood sample taken. Make sure your contact information is correct and up-to-date with all of your medical providers so that if your baby needs more testing, you can be reached immediately. If your contact information changes, please call the Maritime Newborn Screening Program.

Results will be sent to your health care provider, or to the birth hospital.

If your baby has a positive screen, your health care provider, or a provider from the Maritime Newborn Screening Program will contact you right away about getting follow-up tests.

Screening for hemoglobin (blood) diseases may also detect if your baby is a carrier. Babies who are carriers are healthy and usually do not need any special medical treatment.



## Contact Information

IWK Health Centre's Maritime  
Newborn Screening Program  
5850/5980 University Avenue  
PO Box 9700  
Halifax, Nova Scotia  
B3K 6R8

[www.maritimewbornscreening.ca](http://www.maritimewbornscreening.ca)

Email: [MNBSinfo@iwk.nshealth.ca](mailto:MNBSinfo@iwk.nshealth.ca)

Phone: (902) 470-7998

1-888-470-5888 extension 7998

Fax: (902) 470-6974



Last Update: 12/2017

Next Review: March 2020

## Newborn Screening

---

Babies first steps to a healthy life!



MARITIME  
**Newborn Screening**  
PROGRAM  
PROGRAMME DE  
**dépistage néonatal**  
DES MARITIMES



## What is Newborn Screening?

All babies born in Canada have access to newborn screening, which is a simple blood test that can find rare diseases. Some of these diseases can cause serious problems if not treated early.

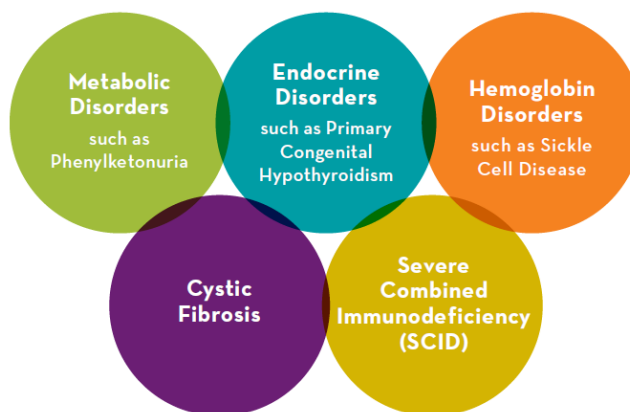
## Treatment Saves Lives

Many babies appear healthy at birth, but may have a serious disease. No one in your family may have one of these diseases, but your baby can still be at risk. Without screening, the disease could remain undetected. Finding these diseases through newborn screening means treatment and monitoring can be started early, and a child with one of these diseases can have a healthier life.

***“You know the date and time your baby was born. You know their weight and height, but do you know their newborn screening results?”***

## How is the Newborn Screen Done?

When the baby is between 24 to 48 hours old, a few drops of blood are taken from the heel and put on special blotter paper. These samples are sent to the laboratory at the IWK Health Centre and tested for 5 different kinds of diseases:



*To see a list of diseases for which we screen, or for more information, go to our website at:*

[www.maritimewbornscreening.ca](http://www.maritimewbornscreening.ca)



## Screening Results

### Screen Negative

This is the most common screening result. It means that there is a low risk for the baby to have one of these rare diseases.

### Screen Positive

A screen positive result does not mean that the baby has a disease, only that further testing is needed. Your baby's health care provider, or a provider from the Maritime Newborn Screening Program will contact you right away about getting follow-up tests.

If the follow-up tests confirm a specific disease, your baby will need medical attention. The Maritime Newborn Screening Program provides support, genetic counselling, and information to all families when a diagnosis is made.

### Screen Follow-up

Another sample is sometimes required to complete the screening process if:

- If you have twins and they are the same sex, then a repeat sample at two weeks of age will be needed.
- If your baby is premature, has a low birth weight, or is sick, a repeat sample will be needed when the baby leaves the hospital.
- If your baby had a blood transfusion, a repeat sample will be needed 3 months afterwards.
- If the sample was not collected properly, was not collected at the best time, is of poor quality, or results are unclear, then a repeat sample will be needed.

*If you are asked for a repeat blood sample from your baby, it is important for your baby's health that you provide this sample.*