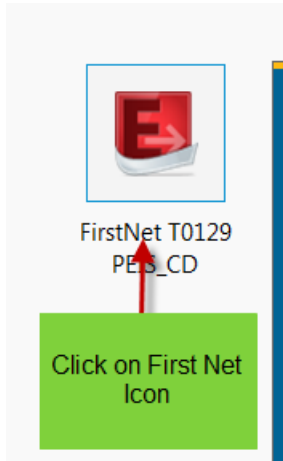


Accessing FirstNet

After accessing the Cerner app

- .Click on the FirstNet icon

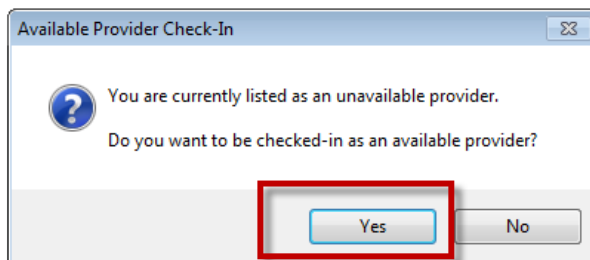


This will launch the user into the FirstNet application.

Checking In: Beginning of Your Shift

Provider Check in - This functionality enables an end-user to make it known to the Department that they are available, as a provider, to treat patients. Once an end user has checked into FirstNet they have the ability to assign themselves to patients by using the assign/unassign provider functionality.

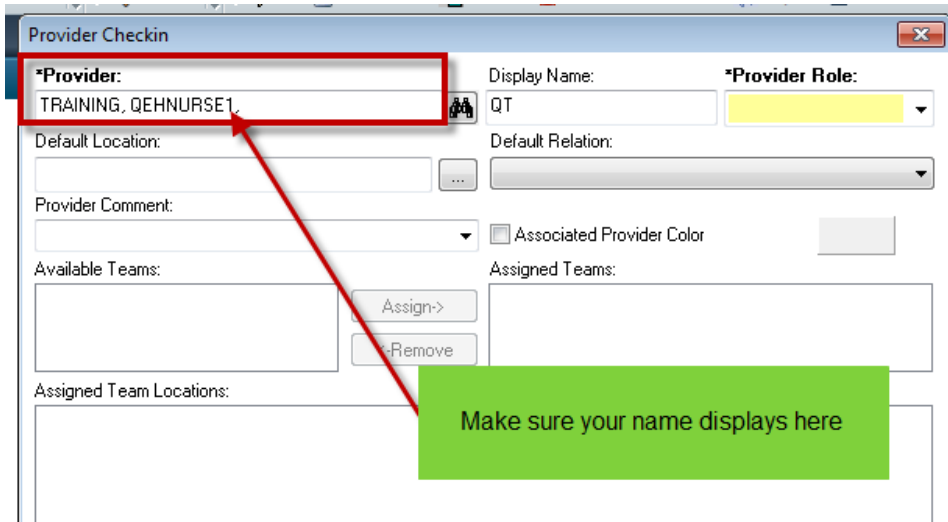
1. The **first time** you log into FirstNet you will be asked if you want to be checked in as an available provider. Click on “yes” to display the Provider Check-In window.



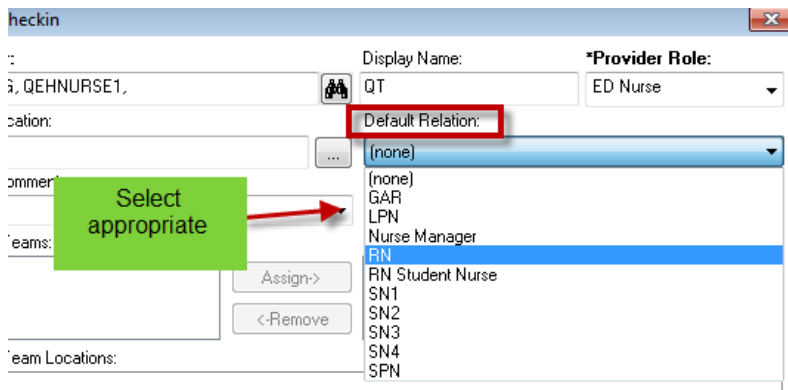
2. If you do not receive this message, you will need to select the Provider Check In icon from the toolbar.



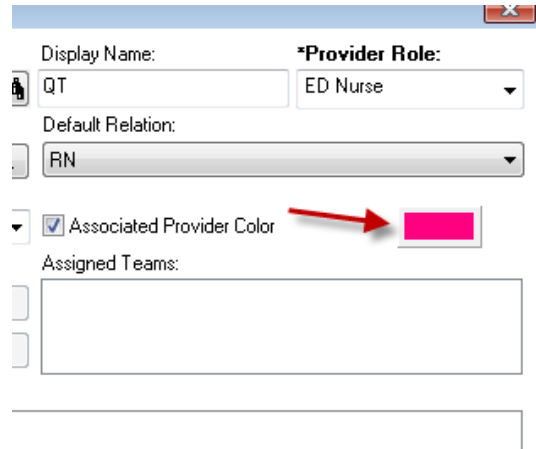
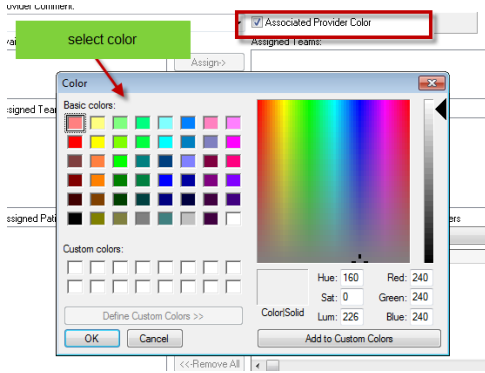
3. Once you have identified yourself as an available provider, or clicked on the above icon, the Provider Check In/Out window will appear.
 - Check to make sure the correct name is in the Provider box



4. Select the appropriate Provider Role



5. Select the color of your choice for the Associated Provider Color. This will display on the Tracking shell with your initials.



6. Review all the information and click OK

