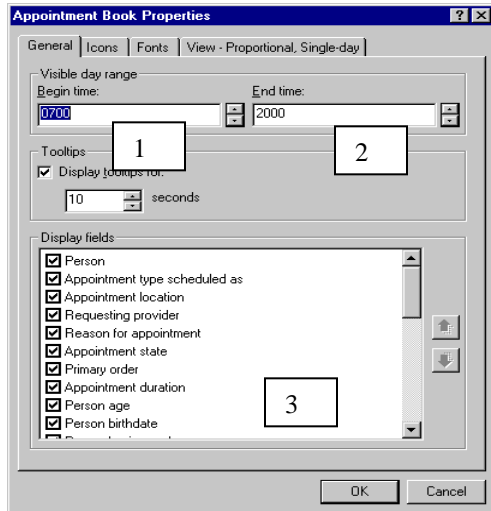


Book Settings

General Tab



1. **Begin Time:** In military time this determines the time that the appointment book will start, this crosses all books and bookshelves.
2. **End Time:** In military time, this determines the time that the appointment book will end, this crosses all books and bookshelves

NOTE: If there are any slots beyond the time designated, these will not be visible on the books. However, by using suggest, you can still schedule into them.

3. **Display fields:** These are the fields that will show in a scheduled appointment on the books. By clicking the up or down arrows, you can change the order in which they are displayed.