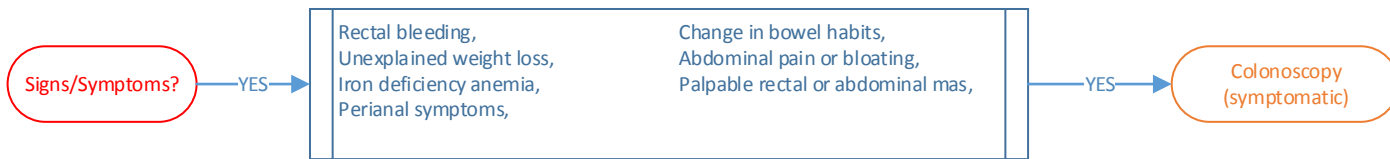
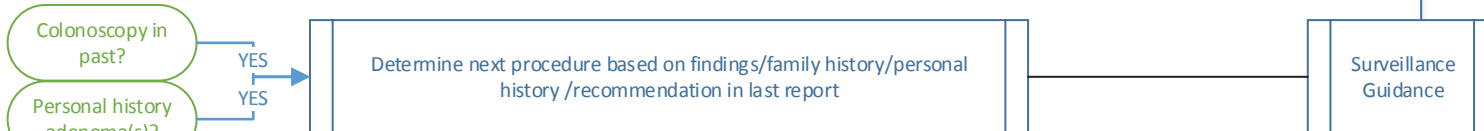


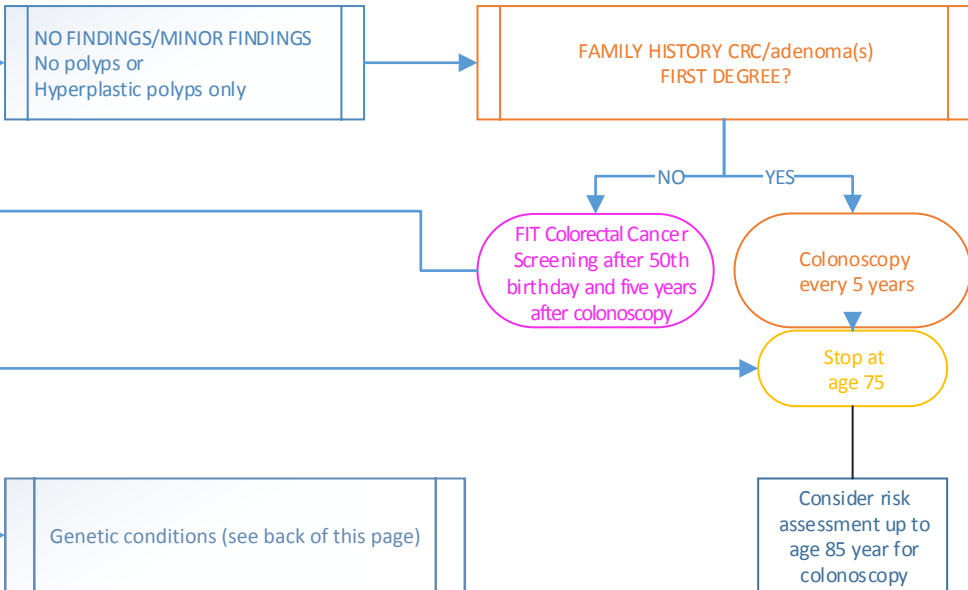
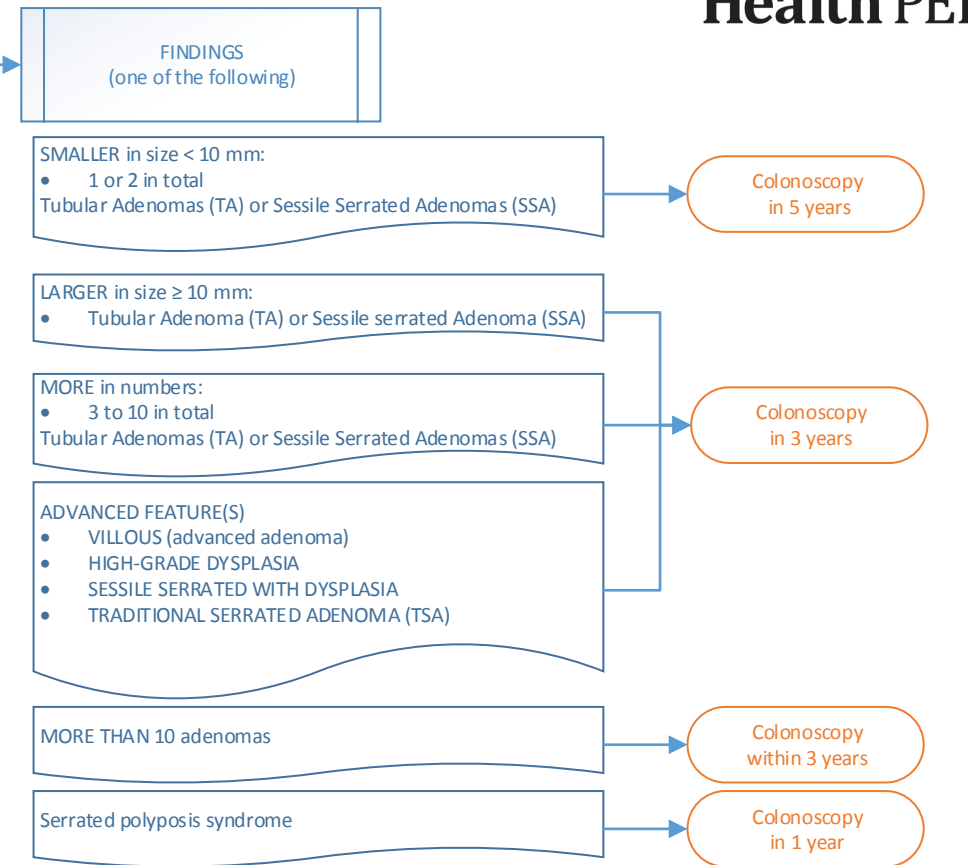
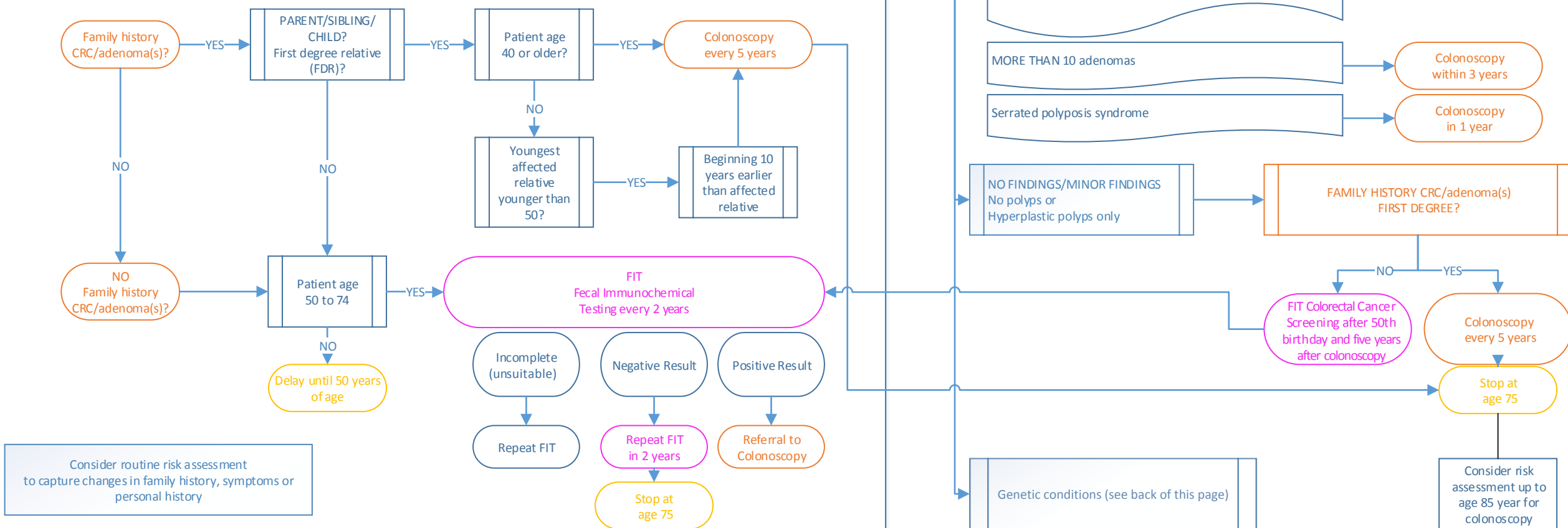
1. SIGNS AND SYMPTOMS OF COLORECTAL CANCER?



2. COLONOSCOPY IN PAST OR PERSONAL HISTORY OF ADENOMAS?



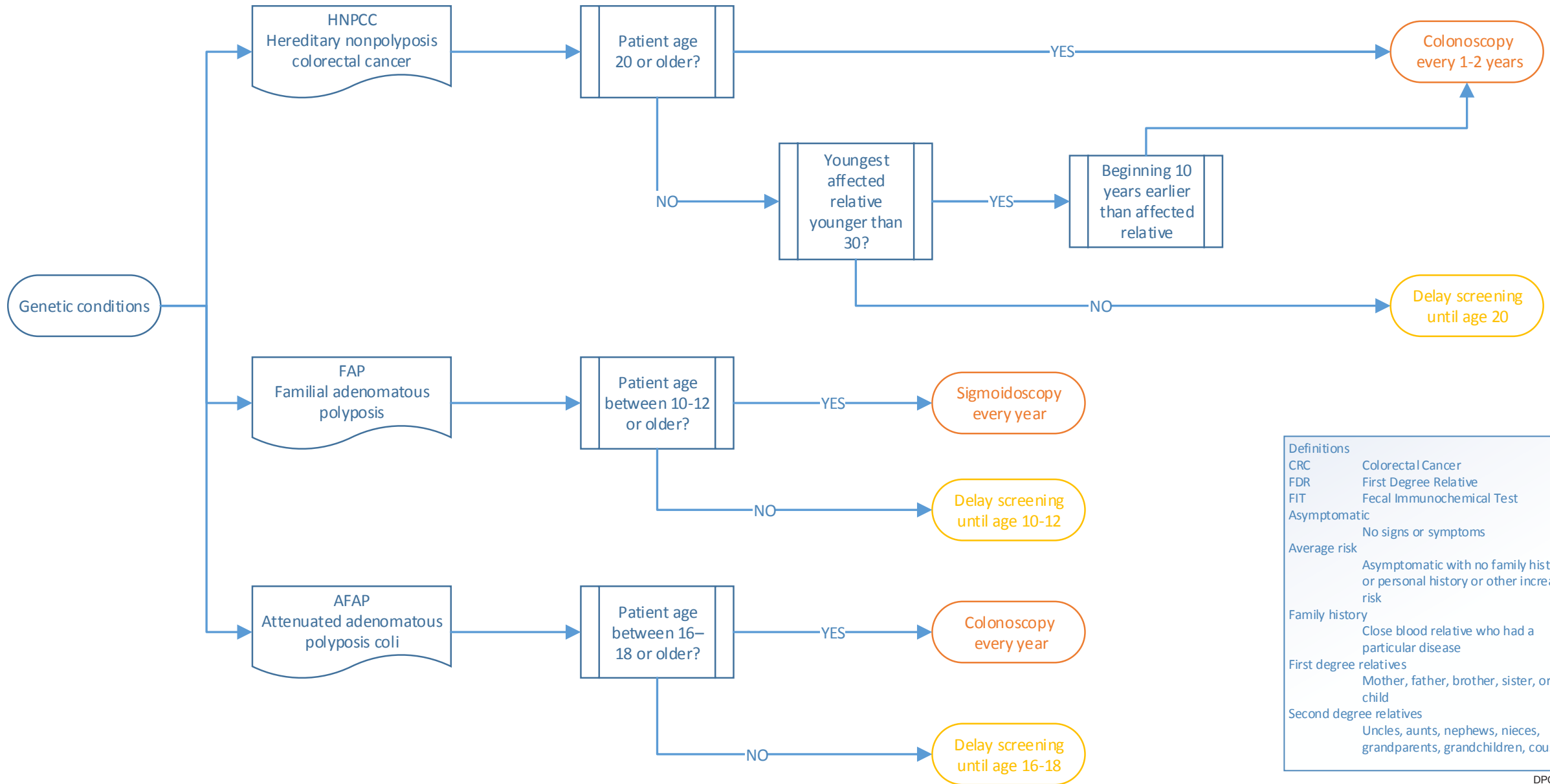
3. FAMILY HISTORY OF COLORECTAL CANCER (CRC) OR ADENOMA(S)?



Consider routine risk assessment to capture changes in family history, symptoms or personal history

Consider risk assessment up to age 85 year for colonoscopy

PEI Provincial Colorectal Cancer Screening - Primary Care Provider Decision Aid



Definitions	
CRC	Colorectal Cancer
FDR	First Degree Relative
FIT	Fecal Immunochemical Test
Asymptomatic	No signs or symptoms
Average risk	Asymptomatic with no family history or personal history or other increased risk
Family history	Close blood relative who had a particular disease
First degree relatives	Mother, father, brother, sister, or child
Second degree relatives	Uncles, aunts, nephews, nieces, grandparents, grandchildren, cousins

DPCEC-3952