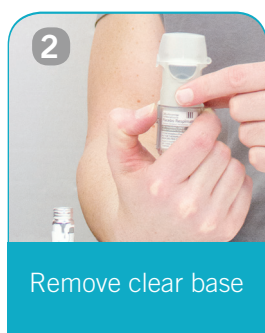


Respimat®

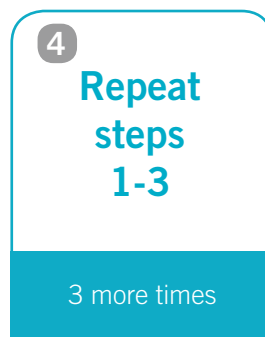


How do I use my Respimat®?

Assembly:

1. The Respimat® comes in two pieces. An inhaler, and a medication cartridge.
2. With cap closed, press safety catch to remove clear base of the inhaler.
3. Push the narrow end of the cartridge into the inhaler as far as it will go.
4. Place inhaler upright on a firm surface and push firmly down on inhaler to ensure cartridge has gone all the way in.
5. Put the clear base back into place.

Note: Once assembled, the inhaler must NOT be taken apart.



Priming:

1. Hold the inhaler upright with cap closed. **TURN** the base in the direction of the arrows on label until it “clicks” (half turn).
2. Flip the cap **OPEN** until it snaps fully open.
3. Point the inhaler towards the ground. **PRESS** the dose release button. A soft mist will appear. Close the cap.
4. Repeat steps 1-3, 3 more times to ensure inhaler is prepared for use.

Respimat®



1

Hold inhaler upright



2

TURN base until it "clicks"



3

OPEN cap until it snaps fully open



4

Breathe out slowly and fully



5

While breathing slow and deep PRESS dose release button



6

Hold breath. Breathe out.



7

Close cap

How do I use my Respimat®?

1. Hold the inhaler upright with cap closed.
2. **TURN** the clear base in the direction of arrows on the label until it "clicks" (half turn).
3. Flip the cap **OPEN** until it snaps fully open.
4. Breathe out slowly and fully.
5. Put the mouthpiece between lips. Close lips around the mouthpiece without covering the air vents. Point the inhaler towards the back of throat. While taking a **slow, deep** breath, **PRESS** the dose release button and continue to breathe in slowly.
6. Remove inhaler from mouth and hold breath for 10 seconds or as long as you can. Breathe out.
7. Close the cap.

Note: The acronym **TOP** – Turn **O**pen **P**ress is a quick reference for device instruction.

Care of a Respimat®

1. All that is required to keep the inhaler clean is to wipe the mouthpiece inside and out once a week with a damp cloth. Any slight discoloration of the mouthpiece will not affect the performance of the inhaler.
2. Once assembled, the inhaler must NOT be taken apart.
3. Check the dose indicator to see approximately how many doses are left. When the pointer enters the red area of the scale a new prescription is needed. When the arrow reaches the end of the scale the inhaler locks automatically.



For video instruction:
lungsask.ca/inhaler-resources